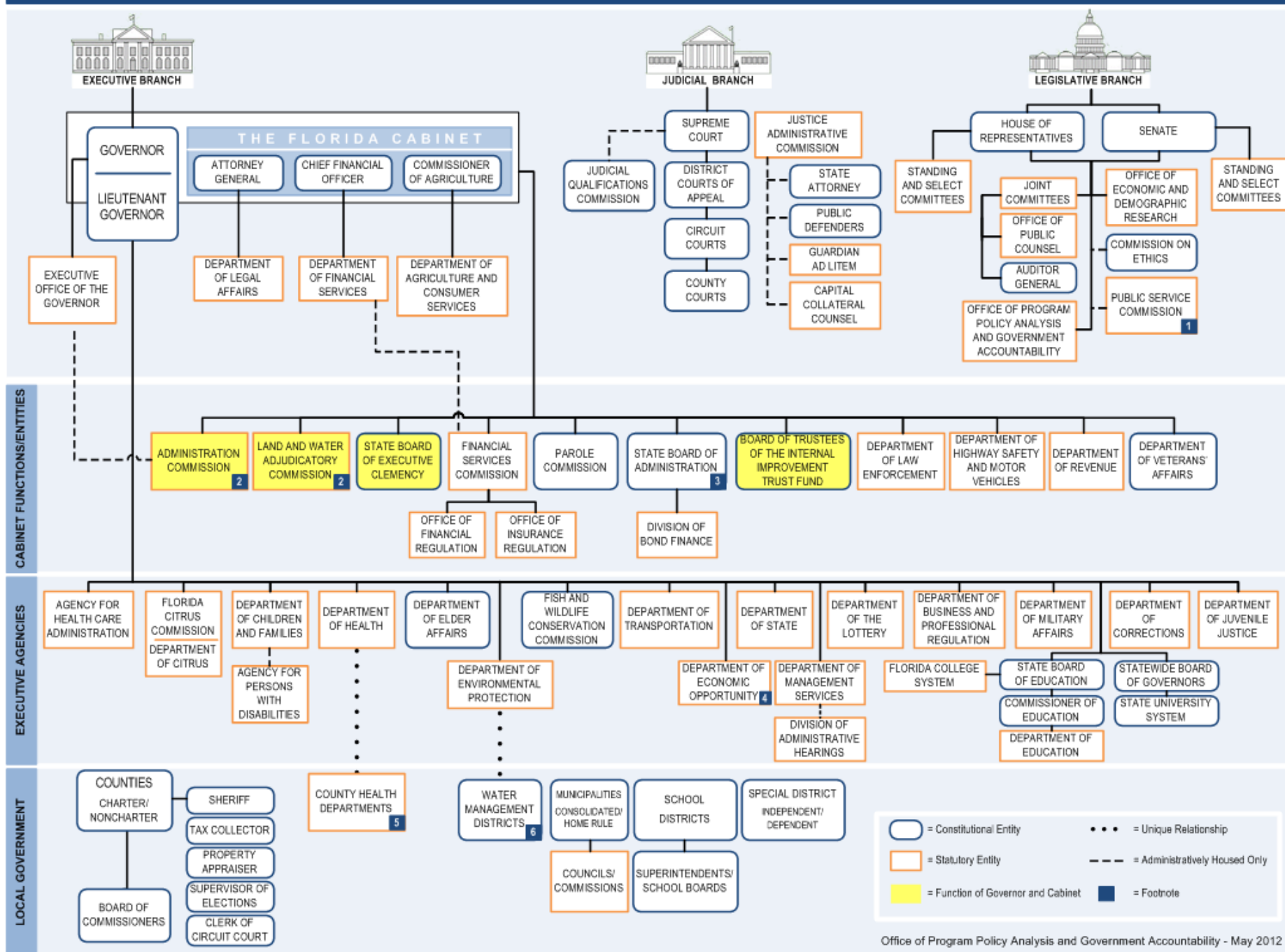


THE FLORIDA ELECTORATE



1. The Public Service Commission is an arm of the legislative branch of government (s. 350.001, *Florida Statutes*).
2. The Administration Commission and the Land and Water Adjudicatory Commission are composed of the Governor and the Cabinet (ss. 14.202 and 380.07, *Florida Statutes*).
3. The Commissioner of Agriculture is not a member of the State Board of Administration (Article IV, Section 4.(e), *Constitution of the State of Florida*).
4. Chapter 2011-142, *Laws of Florida*, created the Department of Economic Opportunity, consolidating several functions of the Agency for Workforce Innovation, the Department of Community Affairs, and the Office of Tourism, Trade, and Economic Development. The consolidation was completed on October 1, 2011.
5. County health departments have a contractual relationship with the Florida Department of Health (s. 154.01(3), *Florida Statutes*).
6. Water management districts have individual governing boards but the Department of Environmental Protection may exercise general supervisory authority over water management districts (s. 373.026(7), *Florida Statutes*).